



Holograms!  
Projection Mapping!  
Interactive Lasers!  
BMX Daredevils!

"Amazing! A holiday show for the  
millennial generation and their kids."  
Dan McGrath, Indigo Entertainment

"Great show for the whole family!"  
Fox 5, Minnesota

© Productions Las Vegas Presents

**HOLIDAY**  
*Dreams*

A Spectacular Holiday Cirque!

Technical Rider  
Holiday Dreams Show

5.6.2022

**Q** productions  
las vegas, inc.

## Performance

---

Holiday Dreams is an advanced and high-end holiday-themed show that features visual effects such as Projection Mapping, Interactive Lasers and Holograms. In addition, Holiday Dreams has large-scale production elements such as Trampwall, BMX Ramps, Aerial Acrobatics and more! In order to achieve the most advanced holiday show in the market, the client, venue and buyers must adhere to the following guidelines and specifications.



## THREE THINGS:

1. Obviously READ THE ENTIRE RIDER  
Yep, you'd be surprised. If you are not the person that is in charge of reading the rider please forward to the Venue's Stage Manager or TECHNICAL person IN CHARGE at the VENUE.
2. **CALL AND ADVANCE WITH TECHNICAL DIRECTOR AND/OR Q PRODUCTIONS STAFF;**  
A little conversation goes a long way. All venues are not equal and circumstances may change. It is IMPORTANT to reach out to Q Productions Las Vegas staff to talk about the show, load-in/out, etc.  
CONSTANT COMMUNICATION IS A MUST.
3. The new Star Wars movies suck.



## Load-In



We require access to loading dock or area close to the theater.

Labor in (if union) Venue provides:

- 2 truck loaders
- 5 stage hands
- 1 rigger up
- 1 rigger down
- 1 house LD / Video
- 1 House sound
- 1 house electric
- 1 house carpenter

Load-In has to be done a minimum of 5 hours before show time. On average it takes 1 hour for a crew to unload the equipment from the truck. Please check with Q Productions Las Vegas for non-union requirements and number of crew.

## Set-Up



Venue to provide:

- Two (2) 10 or 12 foot "A" frame ladders
- One (1) Genie lift or equivalent
- Eight (8) house cable ramps

## Fly Lines



One clear Mid to Upstage batten where hologram curtain will be hung (tied to batten).

One clear batten downstage of hologram curtain where set panels will be hung.

In an Arena Configuration:

Downstage truss approximately 60' wide;

Midstage Truss for Set Pieces approximately 60' wide;

Upstage Truss for Scrim approximately 60' wide;

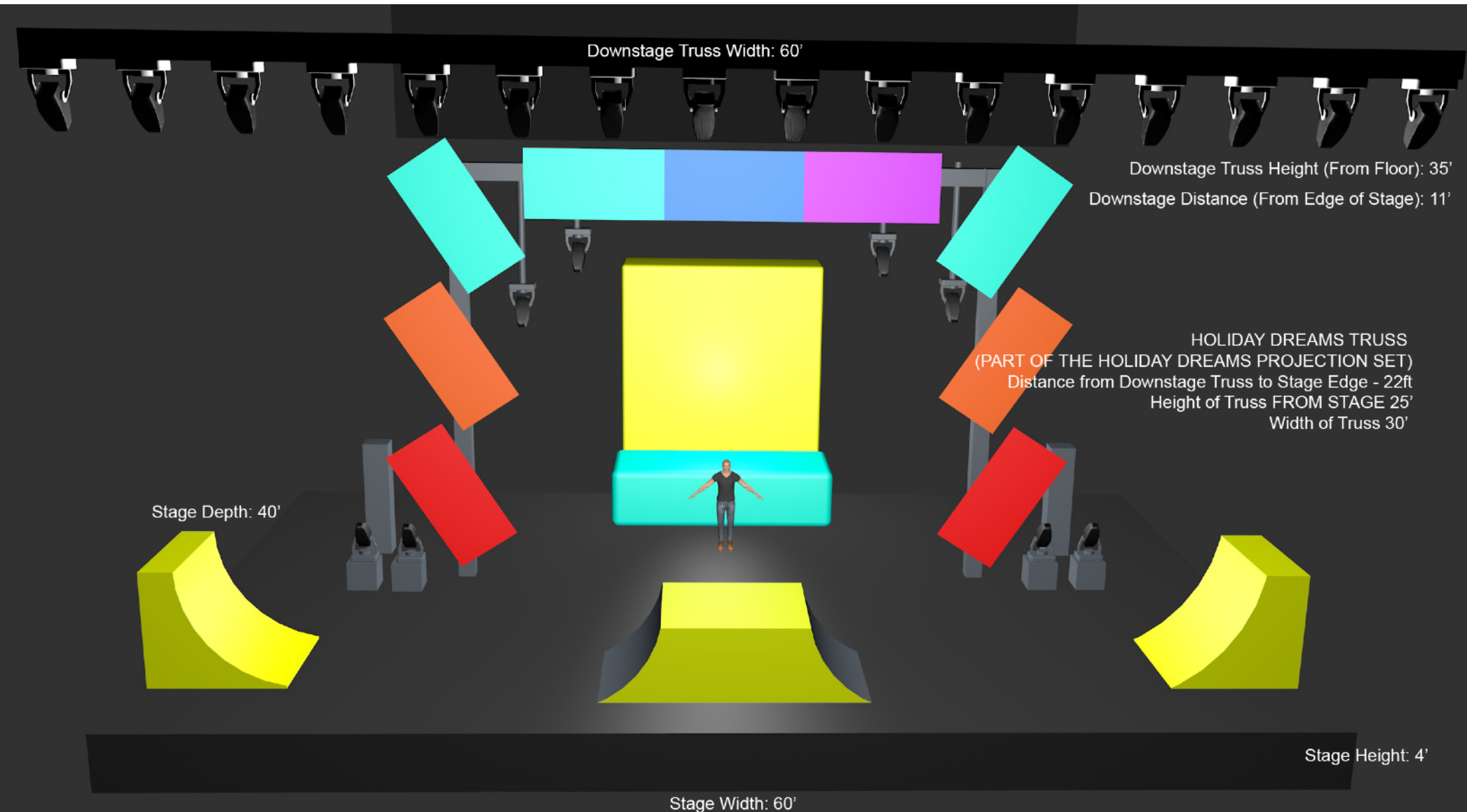
## Pig Weights



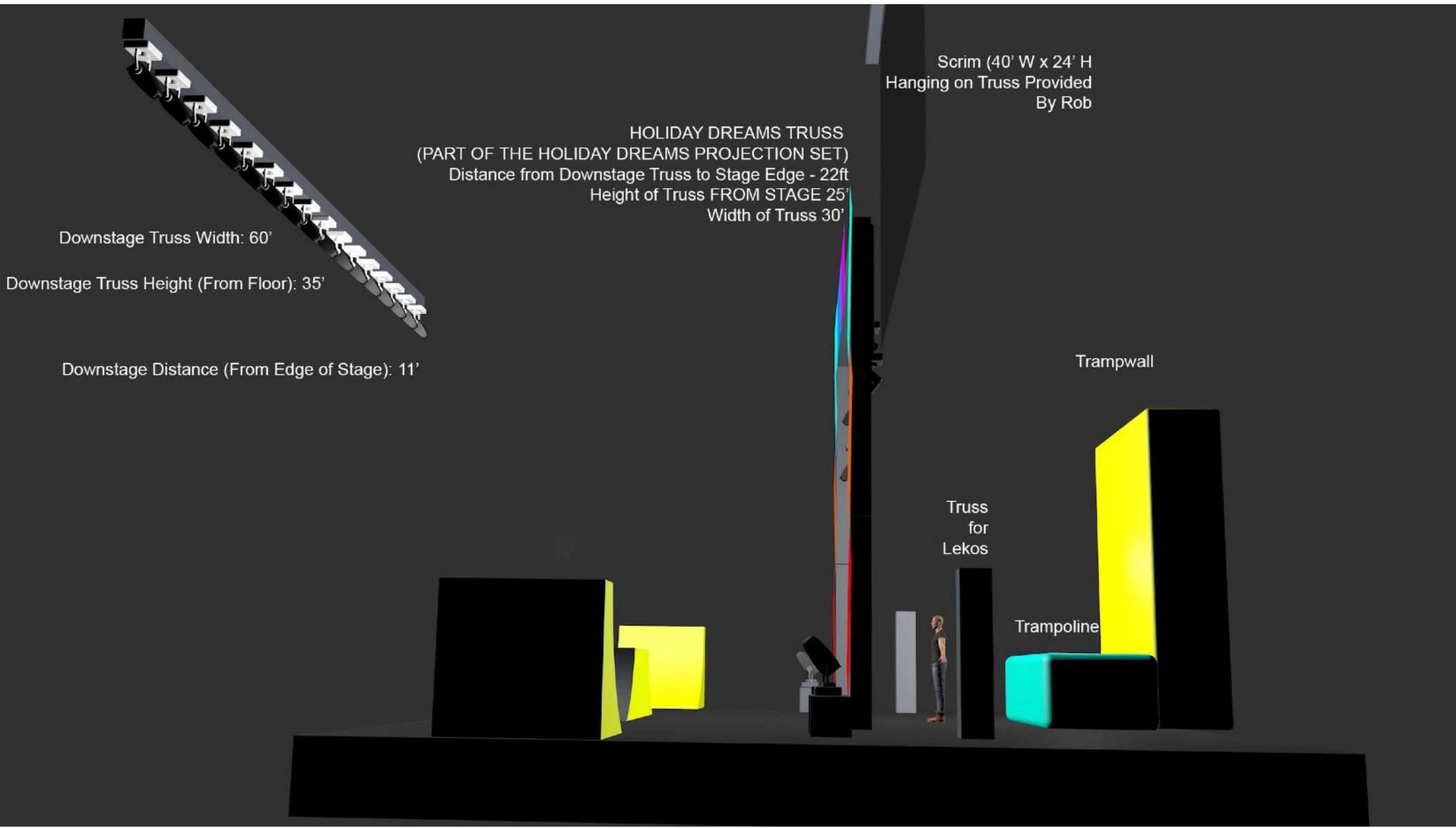
A total of 700 lbs of pig weights.

500lbs is to secure/weigh down our motorized winch. Please check with Q Productions Las Vegas management as they may not be needed in some cases.

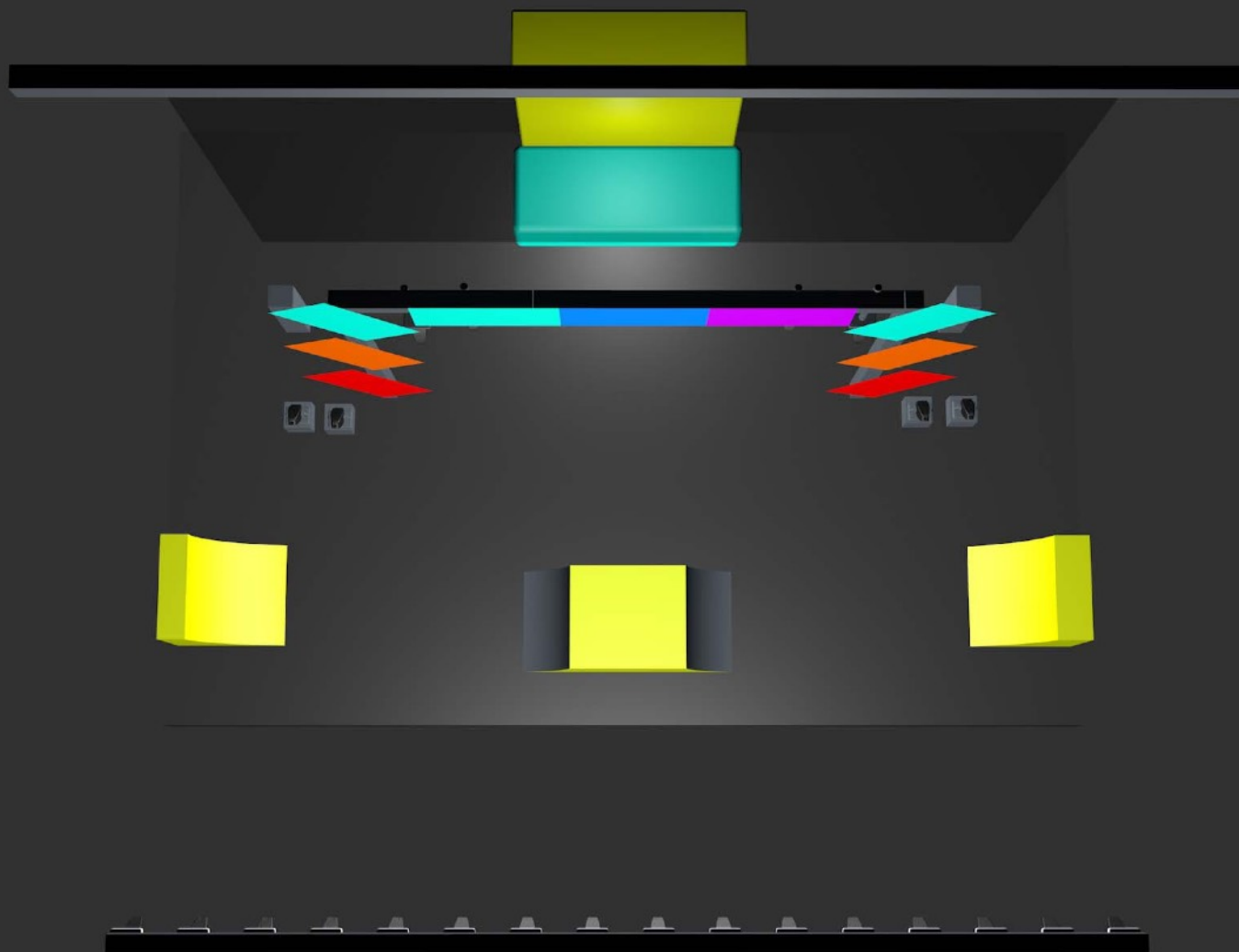
## Arena Configuration



# Arena Configuration

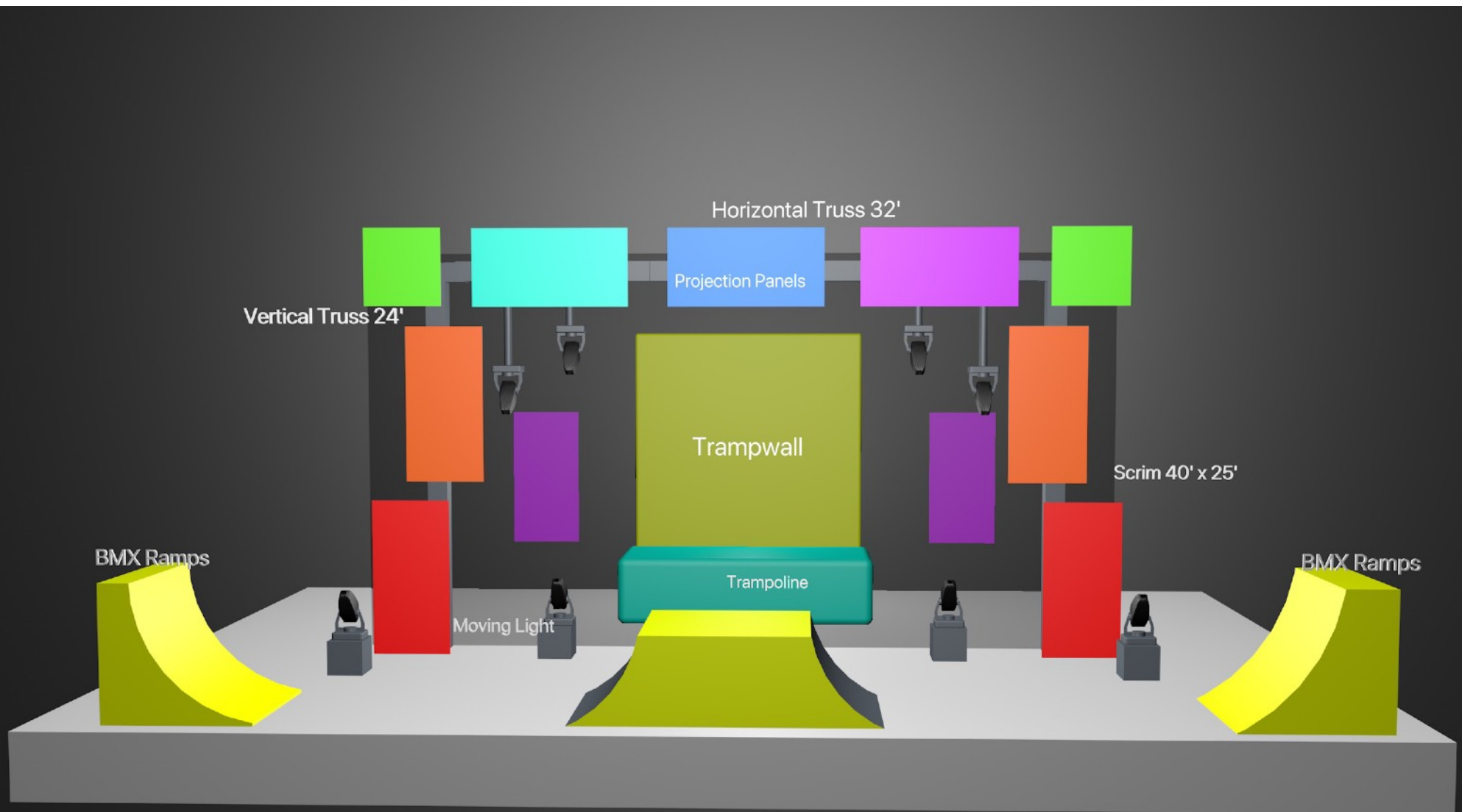


## Arena Configuration

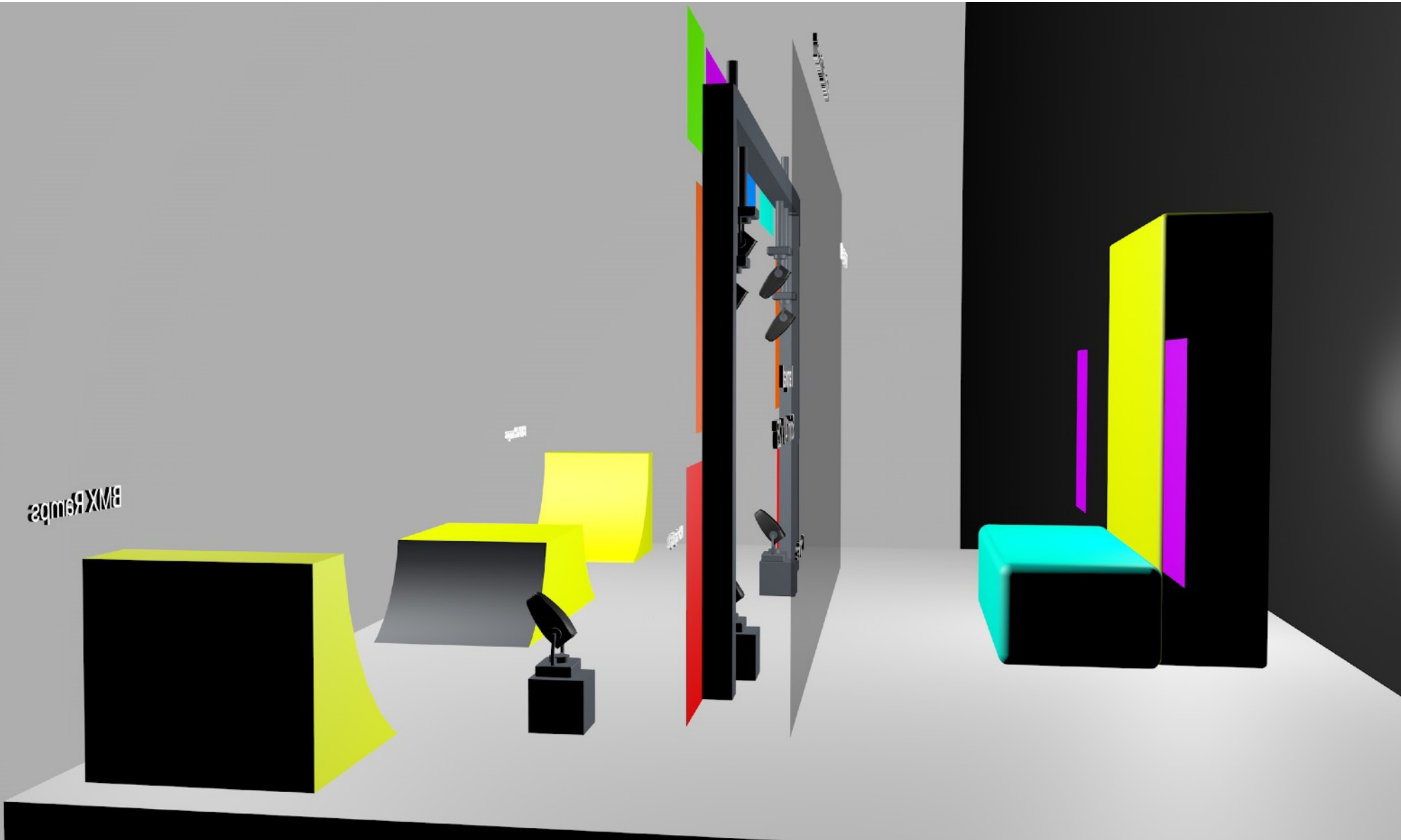




# Set



Set



Set



Secondary Riggin Point (2) for Aerial (Upstage)



Scrim (Pipe Hung)t



Projection Mapping Stage

Main Rigging Point (1) for Aerialist Downstage



## Show & Rehearsal Crew

Venue provides:  
4 stage hands  
1 house sound  
1 house LD / house Video  
2 Spot Operators

Rehearsal and Show Crew MUST BE THE SAME personnel.

## Communication

Venue provides:  
6 wireless Clear Comm Units  
Spot ops MUST BE ON CLEAR COMMS  
Front of House Clear Comm for Director/Cue Caller

## Load Out Crew



Venue provides:  
2 truck loaders  
5 stage hands

If union house then add necessary personnel as per union rules.

## Power

Provided by venue:

Stage power

1 distro

1-30 amp out

3 - 20 amp out

1 set of tails cams in and out

## Lighting



Holiday Dreams features heavy use of Projection Mapping, lasers and Holograms. These elements require a dark theatrical setting when being used. House lights must be kept turned off with the exception of exit signs.

Venue to provide Haze machines required for lighting effects. If the venue is larger than 1,800 seats, venue must provide two (2) Reel EFX DF-50 DMX Diffusion Hazers or similar.

Theatrical Manager must advance the light plot and technical pack no later than 30 days before presentation of show. Show look and cues will be coordinated with in-house lighting designer and operator.

## Sound



To be provided by venue:

5 wireless headset mics and packs

1 Hand-held Wireless Mic

2 Radial USB Pro DI Box or equivalent

1 Voice of God Mic

**SPECIAL AUDIO NOTES:**

Laser computer PLAYS AUDIO FROM BACKSTAGE RIGHT OR LEFT WING- DI box requested. Line out is minijack

Master Computer plays audio from FRONT OF HOUSE; **Master Computer operator must have an area set up BETWEEN AUDIO AND LIGHTING tech.**

Side fill or stage monitors



## Our Projectors



Our projectors consist of Panasonic PT-DZ21 KU capable of 20,000 lumens.

Power Supply: AC 200 V - 240 V 50 Hz/60 Hz

Power Consumption: 2 300 W (20A)

OR

Barco HDF-W26 capable of 26,000 lumens.

Power: 200-240V / 50-60Hz

Power Consumption: 4,550W / STBY < 10W

30A

We will provide an SDI signal cable for up to 200 ft from our Computer to the projector.

Our computer operator must have complete line of sight to visualize the performance and control the software realtime.

Actual projector used will depend on size of venue and throw distance.

Projectors are to be set between 70' to 160' from front of house to mid stage. There shall be NO OBSTRUCTION in front of Projector lens and a clean line of sight. Projector can be set FOH with a scaffold provided by Arena or set in balcony provided SDI cables reach location.

## Rigging



While we can use the venue's in-house riggers, all rigging must be supervised and approved by our technical rigger.

If rigging to venue ceiling or grid, rigging point(s) must be able to sustain two female aerialist (or one male and one female when applicable) and their aerial apparatus. Approximate 500 lbs of load bearing.

We provide a motorized winch which needs to be placed in an area the size of 4ft x 4ft. Venue to provide approximate 500 lbs of weight such as pig weights or sandbags.

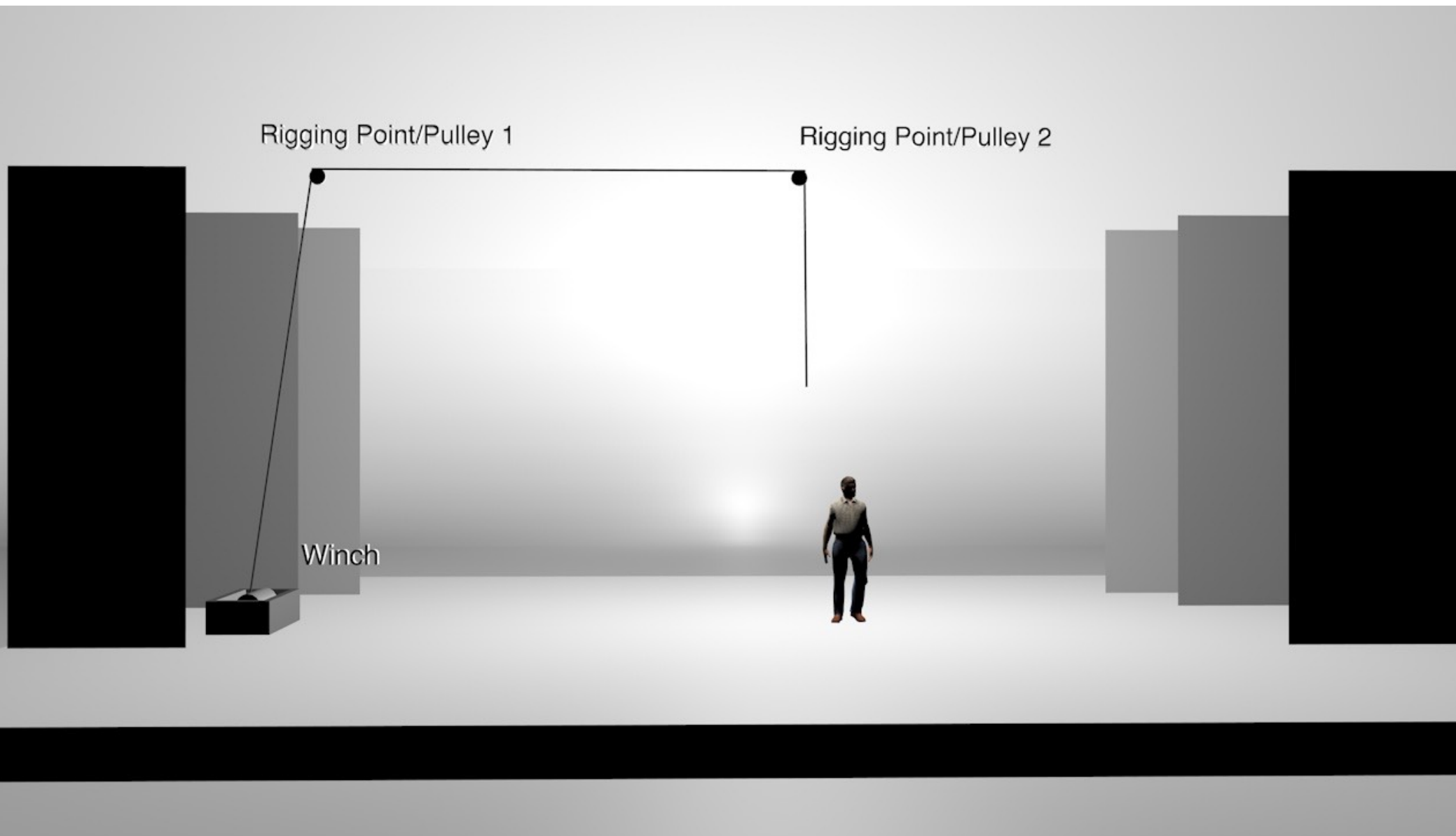
## Winch



Our motorized winch has the following power requirements:

208 V 3 phase; 30 amps

## Typical Winch Rigging Setup



## Laser Section



For the laser section of the show we will need the following requirements met:

A “Director” area where computer and technician can be, with a clear view of performance area to run and monitor laser show.

Fog/haze is necessary for the performance. It will be used before the show to build up haze and during the performance.

Nearly complete darkness preferred. No overhead light over laser area.

Will need 3 standard 110 Edison outlets for lasers onstage or close by.

Will need 2 Standard Edison on separate circuits for foggers which pull 15Amps each.

*Laser Zoning - 30 mins MUST BE ALLOCATED TO ZONE LASERS. This is a very IMPORTANT SAFETY ISSUE. Zoning lasers and rehearsal must be done with no guests or extra personnel around.*

Camera Technicians and/or IMAG Personnel must be made aware that lasers will be used during the performance and to take necessary precautions with their equipment. We WILL NOT shoot lasers into the audience (laser scanning) or into projectors or camera equipment.

All setup is done by Lady Light Creative, LLC. NO EXCEPTIONS.

## Performers

Proper dressing rooms area able to accommodate up to 17 people with a privacy divider for male/female cast members. There shall be full body mirrors, water, tables and chairs and have proper lighting conditions to apply makeup. Towels must be provided for the cast.

## Set-Up & Rehearsal Time

In order to create a successful and unforgettable performance we must have a section of time blocked for Holiday Dreams. A 5 hour uninterrupted setup time allocated to our production is used for proper zoning of the lasers, staging, safety, choreography, light setup, projector setup and focusing, mapping, etc. We understand that an event/theatrical show has many “moving parts” and we are willing to work with the respective people to accommodate to a schedule. We will not however compromise safety. Therefore client must discuss in advance with our team. A run-through rehearsal to setup lighting and sound levels will be given prior to the main performance. Lighting, sound, stage and technical personnel must be present during this rehearsal.



## Hospitality

During load-in, coffee, tea and water stations should be filled and present from the time of load-in until after show time. In addition, a food station (deli style) lunch tray on ice with sandwiches, snacks, power bars and fruits should be setup in the green room for performers to be delivered late morning/lunch. Drinks should include water, carbonated water, soft drinks.

A hot meal must be provided at time of dinner for all cast and Q Productions Las Vegas crew or a \$30 per person dinner buy-out for each performer and Q productions Las Vegas tech crew. Please contact Production Manager regarding details on catering.

## Accommodations

Accommodations for cast & crew shall be dictated by the size of the show presented according to client's venue. Hotel rooms range from a minimum of 8 double-occupancy rooms to 12 double-occupancy rooms. Cast and crew shall stay in a hotel located in a safe area of town and shall have a rating of at least 3 stars according to Expedia.

**Rooms shall be booked for two nights.** Please advance with Production Coordinator regarding actual amount of rooms needed.





DISCLAIMER: The following rider is a general purpose basic guide serve to inform client of the basic requirements needed by Holiday Dreams™ for their performance. ALL DETAILS must be discussed and approved by Holiday Dreams™ and Q Productions Las Vegas, Inc. prior to performance.